

HOW TO REMOVE A HANG-UP TREE



LAST EDITED NOVEMBER 15, 2019

If you accidentally fell a tree into another – always start by taking a break and thinking through the situation calmly. Removing a trapped tree is always a hazardous undertaking and there is no need to rush. Choose the safest solution to the problem even if it takes longer. There are several options. Do not be afraid to call for help – your safety is more important than anything else.

Below are two methods that you can use to easily bring down a hung-up tree – as long as it is not too big or too entangled in the second tree. But first let's take a quick look at recommended tools and some very important safety rules.

Tools

These are tools that will come in handy when removing a hung-up tree: • Turning strap • Turning hook. Often comes with the breaking bar. • Winch (advanced, not covered in this topic) • Forwarders or tractors fitted with grapple loader or winch (advanced, not covered in this topic)



For more info about forestry tools, see the topic [Useful tools and accessories](#).

Safety first!

Working with or close to hung-up trees can be very dangerous. Never leave a trapped tree unmarked. Mark the area with highly visible marking tape if you must leave the area to get other tools or assistance. Follow these rules and make sure to never put yourself or any other person in danger:



Never fell another tree over an already trapped tree.



Never try to cut down the tree that has been felled on.



Never work within the danger zone of the hanging trapped trees.



METHOD

Rolling the tree method

Slightly leaning hang-ups are usually easy to roll down. Use the turning hook or turning strap if you think that the tree is not too stuck. Here's how to do it.

STEP-BY-STEP

1. Asses the tree



Assess the tree to decide in which way the tree can be rolled down.

2. Adjust the hinge



You need to adjust the hinge to make it possible to roll down the tree. Start with sawing off the middle of the hinge so that two corners are saved. Then cut off the corner on the opposite side from the direction in which you intend to roll down the tree. Cut this corner with repeated saw cuts diagonally from above. Make sure to leave the corner on the same side that you intend to roll down the tree.

3. Roll down the tree



Take the turning hook (or use the turning strap to attach a branch as a lever) and roll the tree away from you. Lift straight with a straight back and knees bent. If the tree is large or has hung really tightly, you can increase the rolling force by using the turning hook or turning strap with a longer piece from a thin tree.

METHOD

Step down method

Severely leaning hang-ups can be difficult to roll down, and must be levered or pulled backward. The method is based on removing the tree from the stump or the place where the tree is stuck with the butt end in the ground. The trunk should have a good sliding surface and fall off cleanly.



Be aware that the trunk could sever too early – never stand in the direction of movement or under the trunk.

It is important that the two saw cuts are not made too high up on the trunk as it could “fold down” at the breaking point. If the tree is too tightly hung, you should use a tractor, winch or other machine.

Here's how to perform the step down method.



1. Create a slider bed



Lay branches and poles on the ground in front of the trunk to form a surface /slider bed.

2. Make the backside cut



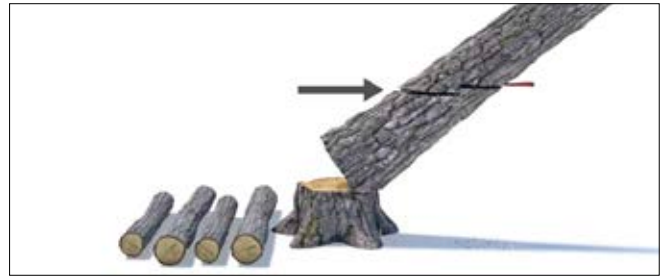
Cut into about half the diameter of the rear of the trunk. Continue cutting from the other side if the guide bar is shorter than the tree diameter.

3. Place a wedge



Insert a wedge to prevent the backside cut from pinching.

4. Saw the front side cut



Saw the next cut from the front, parallel to the previous cut, but 3–5 cm below. Cut into about half the diameter of the trunk. Taper the front of the trunk.

5. Knock the wedge



Knock in the wedge until the wood fibres split between the two cuts. Stay alert – the trunk usually slides off the stump at the same time.

6. The hung-up tree slides backwards



Performed correctly this is the result of the step down method. The tree splits from the stump, slides backwards on the sliding surface, releases from the tree it got hung-up on and falls to the ground.



7. If needed, lever with a pole



If the hung-up tree did not come loose by knocking in the wedge: Lever the tree with a 2–3 m long rod/pole in the direction of movement until the tree breaks loose and slide down.

8. If needed, repeat the process

If the tree does not come loose, repeat the process from step 1. Remember: safety first. If in doubt, seek help from a hung-tree expert.

